

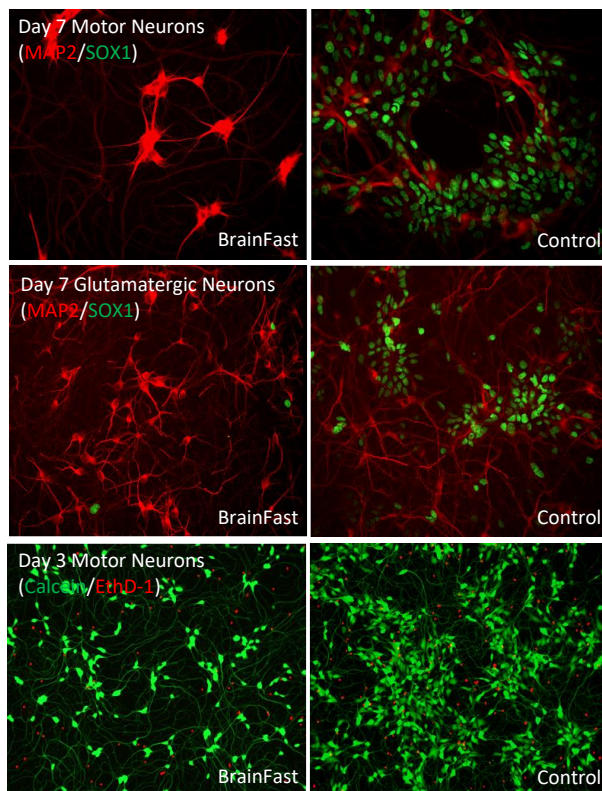
BRAINFAST NEURONAL MATURATION SUPPLEMENT



BrainXell recently developed BrainFast, a medium supplement designed to accelerate neuronal maturation. This supplement ensures any late stage progenitors quickly become post-mitotic neurons and that these neurons rapidly mature.

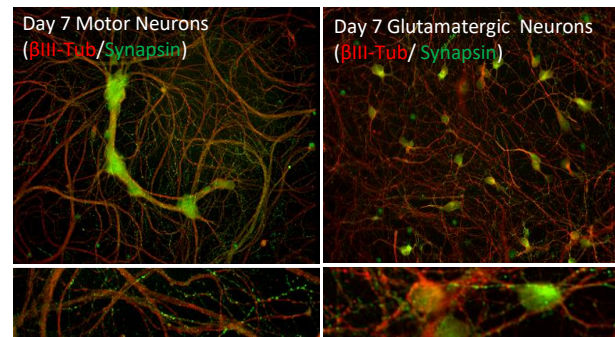
EFFICIENT DIFFERENTIATION

Neuronal progenitors quickly and efficiently become neurons with use of BrainFast. As can be seen in the example below, virtually no SOX1+ progenitors remain after seven days whereas abundant MAP2+ neurons are present. The left column shows cells treated with BrainFast, and the right shows control cells.



RAPID NEURONAL MATURATION

Neurons rapidly express mature markers within the first week and begin to display functional activity within ten days. As can be seen below, both spinal motor and cortical glutamatergic neurons express the pan-neuronal marker β -III-tubulin and the presynaptic marker synapsin.



EASE OF USE

BrainFast can be used with early neurons derived from iPSCs or ESCs as well primary rodent neurons. The supplement is supplied at 1000X for easy addition to existing media recipes. Supplement is only needed on the seeding day and four days later. BrainFast is packaged as two 250 μ L vials, which is sufficient to treat at least 15 multi-well plates.

CONTACT

To order or request additional information, please contact Michael Hendrickson at mhendrickson@brainxell.com.

